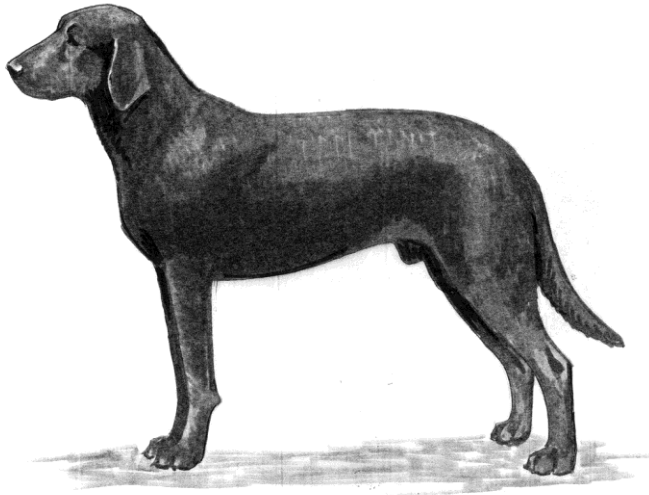


CA DE BESTIAR (Majorca Shepherd Dog)

Official UKC Breed Standard

Herding Group

©Copyright 2006, United Kennel Club



The goals and purposes of this breed standard include: to furnish guidelines for breeders who wish to maintain the quality of their breed and to improve it; to advance this breed to a state of similarity throughout the world; and to act as a guide for judges.

Breeders and judges have the responsibility to avoid any conditions or exaggerations that are detrimental to the health, welfare, essence and soundness of this breed, and must take the responsibility to see that these are not perpetuated.

Any departure from the following should be considered a fault, and the seriousness with which the fault should be regarded should be in exact proportion to its degree and its effect upon the health and welfare of the dog and on the dog's ability to perform its traditional work.

HISTORY

The Ca de Bestiar originated in Spain. It is also known as the Majorca Shepherd Dog.

The Ca de Bestiar was recognized by the United Kennel Club in 2006.

GENERAL APPEARANCE

A medium sized, short coated black flock guardian breed with natural ears and tail.

CHARACTERISTICS

Intelligent, thoughtful, and protective.

HEAD

The head is sharply defined.

MUZZLE - Medium sized and well proportioned to the head.

TEETH - The Ca de Bestiar has a complete set of evenly spaced, white teeth meeting in a scissors or level bite.

NOSE - Black.

EYES - Small, round and set wide apart.

EARS - Left natural.

NECK

The neck is short and strong.

FOREQUARTERS

The forelegs are straight and strong.

BODY

The chest is deep and broad. The ribs are well sprung. The back is straight and strong and the loins are muscular.

HINDQUARTERS

The hind legs are muscular, and the stifles and hocks are well angulated.

FEET

The feet are small and compact, with well arched toes and hard pads.

TAIL

The tail is undocked.

COAT

The coat is short.

COLOR

The color is black.

HEIGHT AND WEIGHT

Average height at the withers is from 22 to 24 inches. Average weight is from 77 to 88 pounds.

GAIT

Swift, very agile and flowing.

DISQUALIFICATIONS

(A dog with a Disqualification must not be considered for placement in a conformation event, and must be reported to UKC.)

Unilateral or bilateral cryptorchid.

Viciousness or extreme shyness.

Albinism.