



Hosted by United Kennel Club, Inc.  
Your Total Dog Registry Since 1898

*October 29-31, 2010*

# GATEWAY *Nationals*

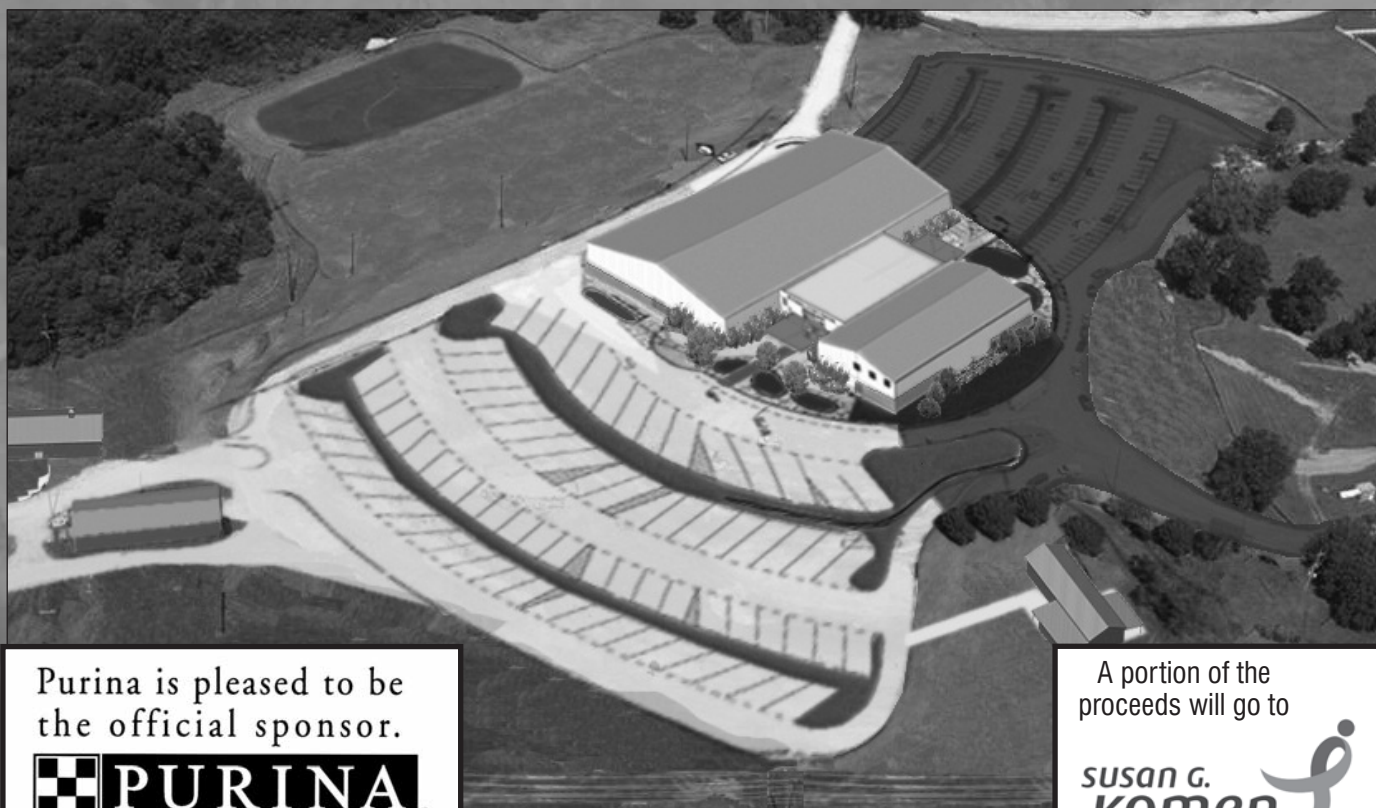
**6 UKC Licensed Multi-Breed Conformation Shows  
4 Agility Trials • 4 Rally Obedience Trials**

All Events held at Purina Events Center, 200 Checkerboard Dr, Gray Summit, Missouri 63039

Temporary Listing Numbers will be available at these events.

Conformation, Agility, Rally Obedience events, crating & grooming area will be indoors.

Building will be open to exhibitors at 8 a.m. and close each evening at 9 PM.  
Overnight security is not provided and **no** dogs may be left in the building overnight.



Purina is pleased to be  
the official sponsor.

 **PURINA**<sup>®</sup>  
CHOSEN BY CHAMPIONS<sup>®</sup>

A portion of the  
proceeds will go to

**susan g.**  
**komen**  
FOR THE **cure** 

## SHOW INFORMATION

### Day of Show Entries & Show Start Time

#### Day of show entries will be taken:

Friday, October 29 (Show #1 and #2) 8:30-10 a.m.  
Saturday, October 30 (Show/Trial #1 and #2) 8:30-9:30 a.m.  
Sunday, October 31 (Show/Trial #1 and #2) 8:30-9:30 a.m.

**Day of show/trial entry fee:** \$25 first entry; \$20 each additional entry, same day, same dog, same event, made at the same time.

### Show Start Times

#### Friday

Show 1 judging will begin with Junior Showmanship at 10:30 AM.

Show 2 - Junior Showmanship to begin immediately following JS S1 – Breed Judging Show 1 & 2 to follow JS or at the discretion of the event committee.

#### Saturday and Sunday

Show 1 judging will begin with Junior Showmanship at 9:30 AM. Show 2 - Junior Showmanship to begin immediately following JS S1 – Breed Judging Show 1 & 2 to follow JS or at the discretion of the event committee. Agility trial and Rally trial Saturday and Sunday will begin at 10 AM, Trial #2 to follow Trial 1 (see *trial and class order on page 9*) or at the discretion of the event committee. All times are Central Time.

### Order of Conformation Judging

Breeds to be judged alphabetically within each group. Group Judging to commence immediately following all breeds in that group, or at the discretion of the Event Committee.

### Armbands

Your armbands are enclosed. Please check the back of the armband to verify that your dog has been entered correctly. If you find any errors, call UKC at (269) 343-9020 or e-mail us at [classic@ukcdogs.com](mailto:classic@ukcdogs.com) so we can correct it immediately. Otherwise, see the staff at the Superintendent's table.

### Class Change/Correction of Entry

Dogs that, according to their owners' records, have completed the requirements for a title after the closing of entries may be transferred from the entered class to another class for which the dog is now eligible, provided that a request for transfer is made in writing to the Superintendent. not later than one-half hour prior to the start of ANY regular judging at the show. All other corrections to entries must be made in writing to the Superintendent. not later than one-half hour prior to the start of ANY regular judging at the show. Personnel will be available at the Superintendent's table to assist you with this.

**Route to the Show** — Purina Event Center is located 45 miles southwest of St. Louis in Gray Summit, MO.

**From St. Louis or Springfield, MO** — Purina Farms is handy to reach from Interstate 44. Simply turn north at the Gray Summit exit (Exit 253) on Interstate 44, and travel two blocks on Missouri Highway 100. Go left on County Road MM, and the entrance to Purina Farms is one mile on the left.

**From Kansas City** — Take I-70 east to the Warrenton exit at Hwy. 47. Go south on Hwy. 47 for approximately 25 miles until you reach Hwy. 100 in Washington. Turn left onto Hwy. 100 and continue to I-44 (approximately 10 miles). Go east on I-44. Follow the directions above from Springfield.

### Useful Phone Numbers & E-mail addresses

Event Superintendent: United Kennel Club, Dog Events Department (269) 343-9020  
Event Chairperson(s): Michelle Morgan, Tony Vacha, Denise Vavla, [classic@ukcdogs.com](mailto:classic@ukcdogs.com)  
Event Coordinator: Tanya Raab, [traab@ukcdogs.com](mailto:traab@ukcdogs.com)

### Building Restrictions

- Grooming and crating indoors. Please keep your grooming area clean and down to a minimum and pick up after your dogs. The "No Smoking" rule will be strictly enforced in all buildings and areas so designated.
- Building will be open to exhibitors at 8 a.m. and close each evening at 9 p.m. Overnight security is not provided and no dogs may be left in the building overnight.
- There will be absolutely NO SMOKING in the buildings, only permissible in designated areas.

### Attention All Ghouls and Goblins!

You are invited to take part in the Halloween festivities at the Gateway Nationals!

**SPECIAL COSTUME CLASSES To be held Saturday, October 30** • At the conclusion of judging – or 3 p.m., whichever comes first

Feel free to dress up early!

No entry fee. Just show up at the designated ring (to be announced.)

Classes include: Scariest! Funniest! Handler and Dog Look Alike

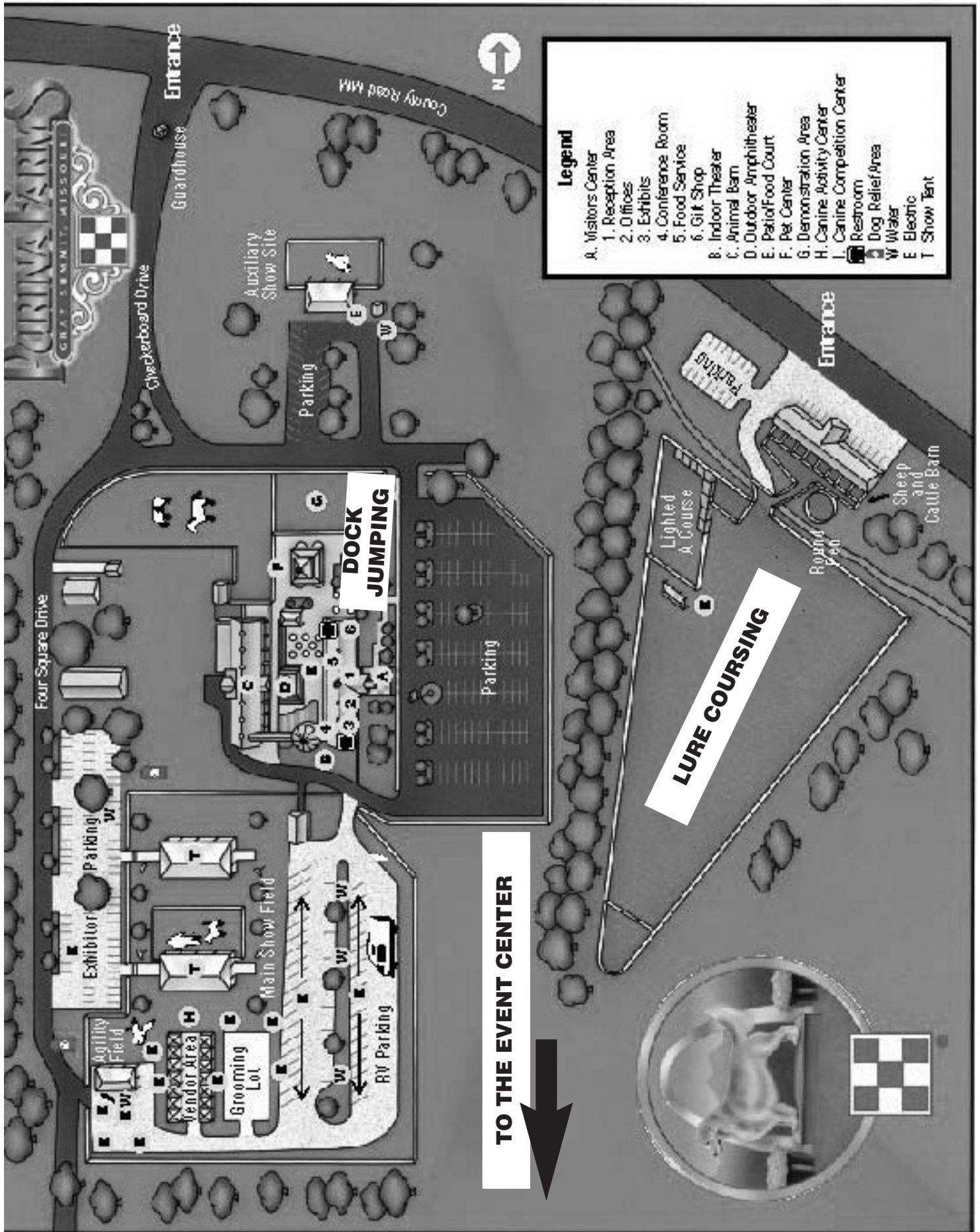
### CRATING AREA DECORATION CONTEST

To be judged throughout the day Saturday by a secret panel of judges! Winners to be announced Sunday morning.

Decoration Divisions include: Scariest! Funniest!

Breed Related (for example "Staffordshire Bull "Terror", "Hogwart Hound" {Hovawart}, Czechoslovakian "Were" Wolf)  
Performance Event Related

Any of the following breeds entered will received a Special Recognition Prize  
Bavarian Mountain Hound • Black Forest Hound • Black Russian Terrier • Transylvanian Hound  
*Trick or Treating is Encouraged in the crating area throughout the weekend!*



## ACCOMODATIONS

**Holiday Inn (Host Hotel),** 4901 Six Flags Road, Eureka MO 63025; (636) 938-6661.

Mention: UKC Dog Show when making reservations. Rate: up to four persons \$69 + tax; \$30 one time non-refundable dog fee applies. Maximum of 4 dogs per room. Approximately one month prior all guest with this group will be required to pay a \$100 deposit that goes towards the balance of their stay; if they shall cancel less than 2 weeks prior to their arrival this deposit is non-refundable.

**Diamond Inn (Travelodge),** 2875 Highway 100, Villa Ridge MO 63089.

Mention: UKC Dog Show when making reservations. Rate: up to four persons \$69 + tax, \$30 one time non-refundable dog fee applies. Group: UKC Dog Show. Maximum of 4 dogs per room. Room group available until September 27, 2010; rooms not reserved by cut-off date will be released.

**Econolodge Eureka** 1725 W 5th St, Eureka MO (636) 938-5348 or (800) 251-1962

**Super 8 Eureka** 1733 W 5th St, Eureka MO (636) 938-4368, or (800) 800-8000 •

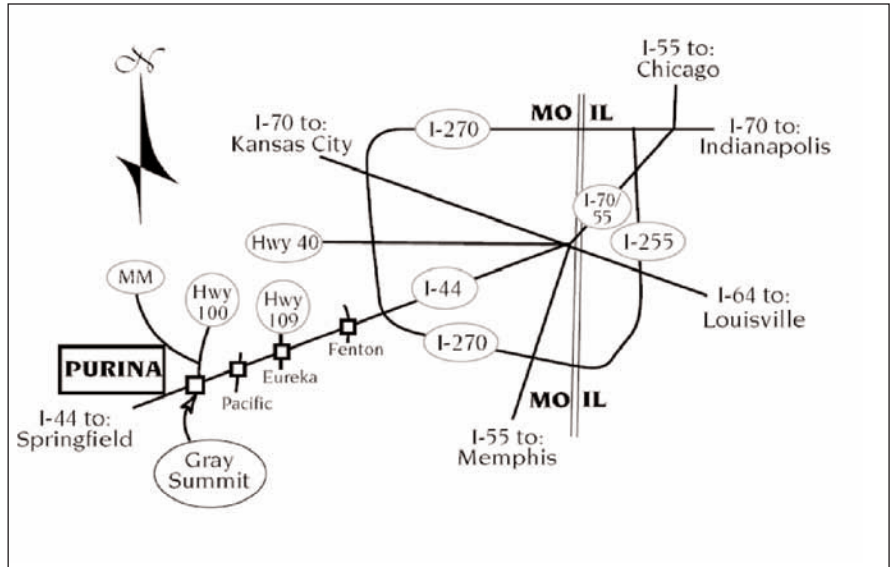
**Budget Lodging** 866 S Outer Rd, St Clair MO (636) 629-1000 or (800) 958-4354

**Super 8 St. Clair** 1010 S Outer Rd, St Clair MO (636) 629-8080 or (800) 800-8000

**Drury Inn** 1088 S Highway Dr, Fenton MO (636) 343-7822 or (800) 378-7946

**Pear Tree Inn** 100 S Highway Dr, Fenton MO (636) 343-8820 or (800) 378-7946

**KOA St. Louis West** 18475 Old Highway 66, Eureka MO (636) 257-3018



## RESTAURANTS

**Hawthorne Inn**  
123 Front St.  
Labadie, MO 63055  
(636) 451-0004

**3 Brothers**  
117 Front St.  
Labadie, MO 63055  
(636) 451-0100

**D'Angelos Pizza**  
101 East Union St.  
Pacific, MO 63069  
(636) 257-4466

**Gourmet Cafe**  
1381 High St.  
Washington, MO 63090  
(636) 390-9131

**Hay Market Restaurant**  
4901 Six Flags Rd.  
Eureka, MO 63025  
(636) 938-6661

**Great Pacific Coffee Company**  
220 South First St.  
Pacific, MO 63069  
(636) 257-9911

**The Depot Cafe**  
109 E. St. Louis St.  
Pacific, MO 63069

Fast-food restaurants: Pizza Hut, New China, Taco Bell, Hardee's, McDonald's, Domino's, KFC and Burger King

## Rules for Overnight RV Guests

Welcome to Purina Farms. We want your experience here to be as enjoyable as possible. To help ensure this, we ask that all visitors conduct themselves in a courteous and respectful manner in and out of the show ring. For your dogs' safety, they should be leashed or crated unless competing in an event.

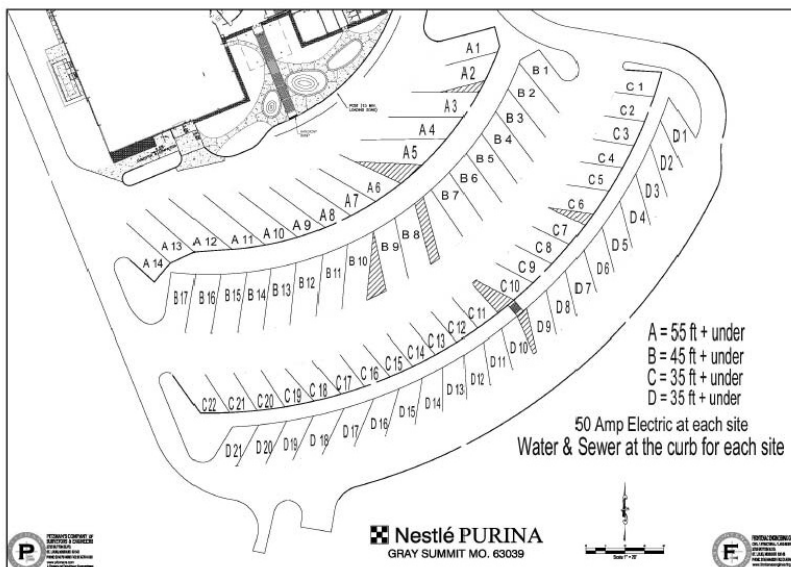
All RV exhibitors are asked to check-in upon their arrival with a club member and/or Purina representative. Camping is only allowed in the designated RV areas on the property. Advanced arrangements need to be made to overnight at the facility past the last day of the event you're attending. As good neighbors, please keep all equipment, extra cars, etc. in your assigned area and dispose of all trash in receptacles provided. For safety reasons no campfires are allowed. Purina Farms is a "family friendly" facility and public intoxication is prohibited.

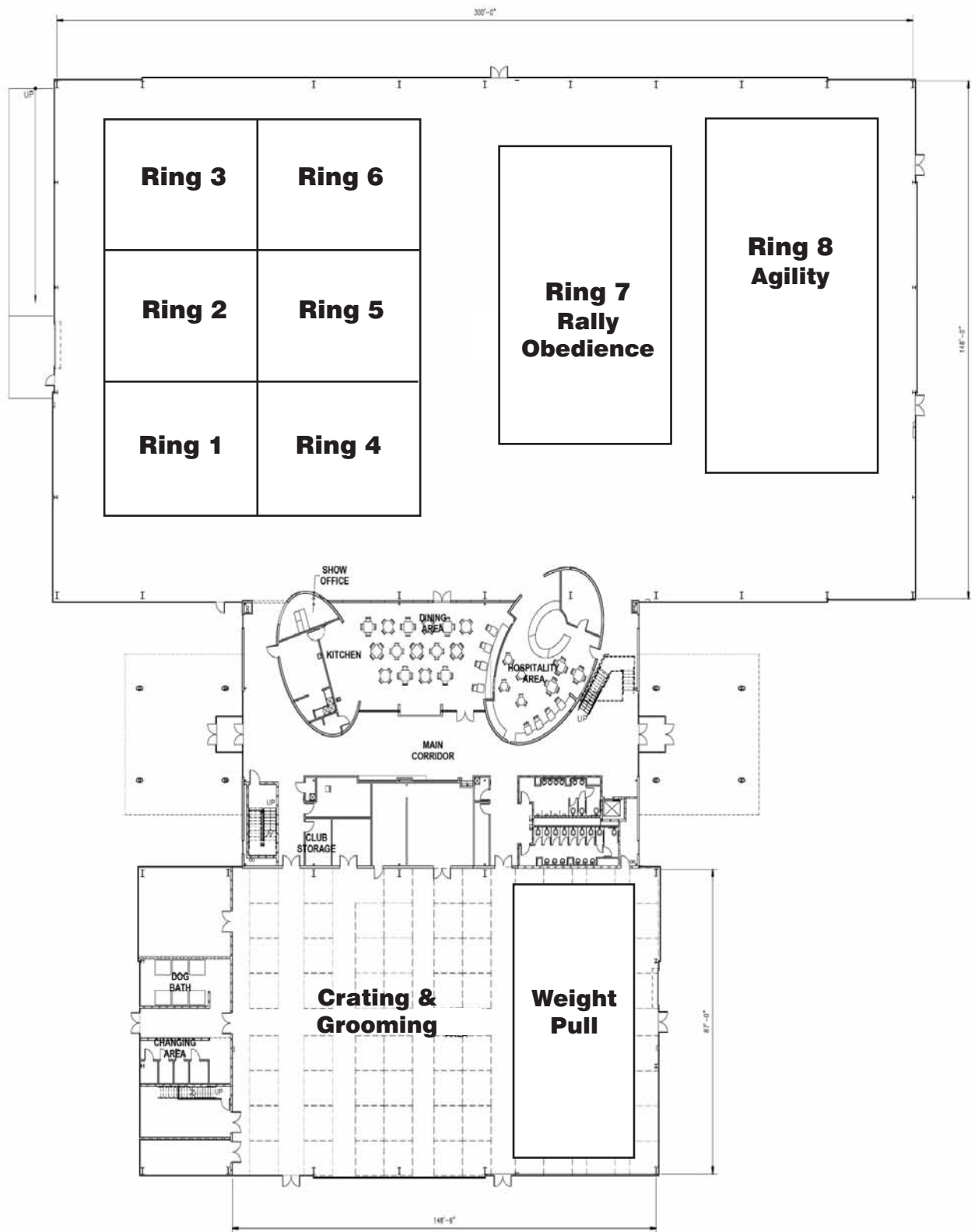
Cars, vans and RV's are only allowed on designated roadways and parking areas. Other motorized vehicles are not allowed on premise with the exception of wheelchairs and golf carts for handicapped exhibitors.

We ask that you stay within the designated show site, which is within 100 yards of the Purina Event Center. Please no smoking in and around buildings. No hunting or swimming is allowed. Weapons of any kind, illegal drugs and fireworks are not permitted on the premises.

Purina is not responsible for any damage, injury or loss to persons, pets and/or property.

Thank you for your cooperation. Enjoy your stay!





## GATEWAY NATIONALS INDEX OF PRE-ENTRIES

For your convenience, the following division of entries has been carefully tabulated; however, the United Kennel Club, Inc. does not assume responsibility for complete accuracy.

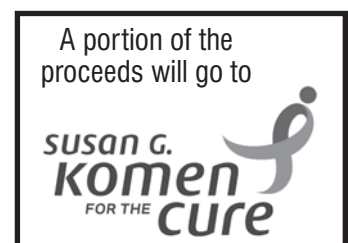
This index has been prepared to enable exhibitors to know the number of dogs pre-entered. All dogs pre-entered may not be present on the show day and day of show entries may change the final entry numbers.

The breakdown is noted by the number of class males-class females-Champions-Grand Champions. For breeds with varieties the variety is noted before the tabulation of Champion and Grand Champions.

BREED	Friday October 29, 2010 Show 1	Friday October 29, 2010 Show 2	Saturday October 30, 2010 Show/Trial 1	Saturday October 30, 2010 Show/Trial 2	Sunday October 31, 2010 Show/Trial 1	Sunday October 31, 2010 Show/Trial 2
AFGHAN HOUND	0-0-1-0	0-0-1-0	0-0-1-0	0-0-1-0	0-0-1-0	0-0-1-0
AFGHAN HOUND ALTERED	0-0-1-0	0-0-1-0	0-0-1-0	0-0-1-0	0-0-1-0	0-0-1-0
AKBASH DOG	0-0-2-1	0-0-2-1	0-0-2-1	0-0-2-1	0-0-2-1	0-0-2-1
AKITA	1-0-0-0	1-0-0-0	1-0-0-0	1-0-0-0	1-0-0-0	1-0-0-0
ALASKAN KLEE KAI	0 CH- 2 GRCH	0 CH- 2 GRCH	0 CH- 2 GRCH	0 CH- 2 GRCH	0-0-0-0	0-0-0-0
ALASKAN MALAMUTE	1-1-1-3	1-1-1-3	1-1-1-3	1-1-1-3	1-1-1-3	1-1-1-3
AMERICAN B & T COONHOUND	0-0-0-0	0-0-0-0	0-1-0-0	0-1-0-0	0-1-0-0	0-1-0-0
AMERICAN BULLDOG	0-0-0-1	0-0-0-1	0-0-0-1	0-0-0-1	0-0-0-1	0-0-0-1
AMERICAN ESKIMO	2-0 S- M 0-1 M 0 CH- 2 GRCH	2-0 S- 0-1 M 0 CH- 2 GRCH	2-0 S- 0-1 M 0 CH- 2 GRCH	2-0 S- 0-1 M 0 CH- 2 GRCH	2-0 S- 0-1 M 0 CH- 2 GRCH	2-0 S- 0-1 M 0 CH- 2 GRCH
AMERICAN FOXHOUND	0-1-1-0	0-1-1-0	0-1-1-0	0-1-1-0	0-1-1-0	0-1-1-0
AMERICAN HAIRLESS TERRIER	0 CH- 2 GRCH	0 CH- 2 GRCH	0 CH- 2 GRCH	0 CH- 2 GRCH	0 CH- 2 GRCH	0 CH- 2 GRCH
AMERICAN PIT BULL TERRIER	0-0-3-1	0-0-3-1	0-0-3-1	0-0-3-1	0-0-3-1	0-0-3-1
AUSTRALIAN SHEPHERD	5-2-0-1	5-2-0-1	5-2-0-1	5-2-0-1	4-2-0-1	4-2-0-1
BASENJI	1-1-0-0	1-1-0-0	1-1-0-0	1-1-0-0	1-1-0-0	1-1-0-0
BEAGLE	0-0-2-2	0-0-2-2	0-0-2-2	0-0-2-2	0-0-2-2	0-0-2-2
BERGAMASCO	0-1-0-0	0-1-0-0	0-1-0-0	0-1-0-0	0-0-0-0	0-0-0-0
BERGER DES PYRENEES	3 CH- 1 GRCH	3 CH- 1 GRCH	3 CH- 1 GRCH	3 CH- 1 GRCH	3 CH- 1 GRCH	3 CH- 1 GRCH
BERGER PICARD	0-1-2-1	0-1-2-1	0-1-2-1	0-1-2-1	0-1-2-1	0-1-2-1
BLOODHOUND	1-1-0-0	1-1-0-0	1-1-0-0	1-1-0-0	1-1-0-0	1-1-0-0
BORDER COLLIE	0-0-0-2	0-0-0-2	0-0-0-2	0-0-0-2	0-0-0-2	0-0-0-2
BOXER	0-0-1-2	0-0-1-2	0-0-1-2	0-0-1-2	0-0-1-2	0-0-1-2
BOXER ALTERED	0-1-0-0	0-1-0-0	0-0-0-0	0-0-0-0	0-0-0-0	0-0-0-0
BRIARD	1-0-0-0	1-0-0-0	1-0-0-0	1-0-0-0	1-0-0-0	1-0-0-0
BULLMASTIFF	1-0-0-0	1-0-0-0	1-0-0-0	1-0-0-0	1-0-0-0	1-0-0-0
CANAAN DOG	4-10-4-6	4-10-3-6	7-11-4-6	7-11-4-6	5-10-3-6	5-10-3-6
CANAAN DOG ALTERED	0-0-0-0	0-0-0-0	0-0-1-0	0-0-1-0	0-0-1-0	0-0-1-0
CARDIGAN WELSH CORGI	0-0-1-0	0-0-1-0	0-0-1-0	0-0-1-0	0-0-1-0	0-0-1-0
CAUCASIAN OVCHARKA	0-0-1-0	0-0-1-0	0-0-1-0	0-1-1-0	0-1-1-0	0-1-1-0
CHINESE CRESTED	0-1-0-0	0-1-0-0	0-1-0-0	0-1-0-0	0-1-0-0	0-1-0-0
DACHSHUND	1-0 M- 0 CH- 0 GRCH	1-0 M- CH- 0 GRCH	1-0 M- 0 CH- 0 GRCH	1-0 M- 0 CH- 0 GRCH	1-0 M- 0 CH- 0 GRCH	1-0 M- 0 CH- 0 GRCH
DALMATIAN	1-1-2-0	1-1-2-0	1-1-2-0	1-1-2-0	1-1-2-0	1-1-2-0
DALMATIAN ALTERED	0-0-1-0	0-0-1-0	0-0-1-0	0-0-1-0	0-0-1-0	0-0-1-0
DOBERMAN PINSCHER	1-1-2-1	1-1-2-1	1-1-2-1	1-1-2-1	1-1-2-1	1-1-2-1
DOBERMAN PINSCHER ALTERED	0-1-0-0	0-1-0-0	0-1-0-0	0-1-0-0	0-1-0-0	0-1-0-0
DOGO ARGENTINO	0-0-0-4	0-0-0-4	0-0-0-4	0-0-0-4	0-0-0-4	0-0-0-4
ENGLISH FOXHOUND	1-0-0-0	1-0-0-0	1-0-0-0	1-0-0-0	1-0-0-0	1-0-0-0
ENGLISH SPRINGER SPANIEL	5-4-0-0	5-4-0-0	5-4-0-0	5-4-0-0	5-4-0-0	5-4-0-0
FRENCH BULLDOG	1-0-0-0	1-0-0-0	1-0-0-0	1-0-0-0	1-0-0-0	1-0-0-0
GERMAN PINSCHER	0-1-0-0	0-1-0-0	0-1-0-0	0-1-0-0	0-1-0-0	0-1-0-0
GERMAN SHEPHERD DOG	1-1-1-3	1-1-1-3	1-2-1-3	1-2-1-4	1-2-1-3	1-2-1-4
GERMAN SHORTHAIRED PNTR	1-0-3-1	1-0-3-1	1-0-4-1	1-0-4-1	1-0-4-1	1-0-4-1
GOLDEN RETRIEVER	2-0-1-0	2-0-1-0	2-0-2-0	2-0-2-0	2-0-2-0	2-0-2-0
GREAT DANE	2-0-0-0	2-0-0-0	2-0-0-0	2-0-0-0	2-0-0-0	2-0-0-0
GREYHOUND	0-1-1-1	0-0-0-2	0-0-1-2	0-0-0-2	0-0-1-1	0-0-0-1
GREYHOUND ALTERED	0-0-0-1	0-0-0-0	0-0-0-1	0-0-0-0	0-0-0-1	0-0-0-0
HUNGARIAN WH VIZSLA	0-0-3-1	0-0-3-1	0-1-3-1	0-1-3-1	0-1-3-1	0-1-3-1
HUNGARIAN WH VIZSLA ALTERED	0-0-0-1	0-0-0-1	0-0-0-1	0-0-0-1	0-0-0-1	0-0-0-1
IBIZAN HOUND	0-1-0-0	0-1-0-0	0-1-0-0	0-1-0-0	0-1-0-0	0-1-0-0
IRISH SETTER	0-1-0-0	0-1-0-0	0-0-1-0	0-0-1-0	0-0-1-0	0-0-1-0
JACK RUSSELL TERRIER	0-1-0-0	0-1-0-0	0-1-0-0	0-1-1-0	0-1-0-0	0-1-0-0
KEESHOND	1-0-2-0	1-0-2-0	1-0-2-0	1-0-2-0	1-0-2-0	1-0-2-0

BREED	Friday October 29, 2010 Show 1	Friday October 29, 2010 Show 2	Saturday October 30, 2010 Show/Trial 1	Saturday October 30, 2010 Show/Trial 2	Sunday October 31, 2010 Show/Trial 1	Sunday October 31, 2010 Show/Trial 2
LABRADOR RETRIEVER	1-1-3-1	2-1-2-1	2-1-2-1	2-1-2-1	2-1-2-1	2-1-2-1
LUNDEHUND	1-1-1-2	1-1-1-2	1-1-1-2	1-1-1-2	1-1-1-2	1-1-1-2
LUNDEHUND ALTERED	1-0-1-0	1-0-1-0	1-0-1-0	1-0-1-0	1-0-1-0	1-0-1-0
MINIATURE BULL TERRIER	0-1-0-0	0-1-0-0	0-1-0-0	0-1-0-0	0-1-0-0	0-1-0-0
M/C STANDARD POODLE	0-0-2-1	0-0-2-1	0-0-2-0	0-0-2-0	0-0-2-0	0-0-2-0
M/C STANDARD POODLE ALTERED	1-0-0-0	1-0-0-0	1-0-0-0	1-0-0-0	1-0-0-0	1-0-0-0
NEAPOLITAN MASTIFF	0-0-0-0	0-0-0-0	1-0-1-0	1-0-1-0	1-0-1-0	1-0-1-0
NEWFOUNDLAND	0-0-1-0	0-0-1-0	0-0-1-0	0-0-1-0	0-1-1-0	0-0-1-0
NEWFOUNDLAND ALTERED	0-0-0-0	0-0-0-0	0-0-0-0	0-0-0-0	0-0-0-0	0-1-0-0
NS DUCK TOLLING RETRIEVER	0-0-1-0	0-0-1-0	0-0-1-0	0-0-1-0	0-0-1-0	0-0-1-0
PAPILLON	2-3-2-1	2-3-2-1	2-2-2-1	2-2-2-1	2-2-2-1	2-2-2-1
PAPILLON ALTERED	0-0-1-0	0-0-1-0	0-0-1-0	0-0-1-0	0-0-1-0	0-0-1-0
PARSON RUSSELL TERRIER	0-1 M- 0 CH- 1 GRCH	0 CH- 1 GRCH	0-1 M- 0 CH- 1 GRCH	0 CH- 1 GRCH	0 CH- 1 GRCH	0 CH- 1 GRCH
PATTERDALE TERRIER	0-0-0-0	0-0-0-0	0-0-0-1	0-0-0-1	0-0-0-0	0-0-0-0
PEMBROKE WELSH CORGI	0-0-3-0	0-0-3-0	0-0-3-0	0-0-3-0	0-0-3-0	0-0-3-0
PHARAOH HOUND	0-0-2-1	0-0-2-1	0-0-2-1	0-0-2-1	0-0-2-1	0-0-2-1
PHARAOH HOUND ALTERED	1-0-0-0	1-0-0-0	1-0-0-0	1-0-0-0	1-0-0-0	1-0-0-0
POODLE	1 CH- 0 GRCH	1 CH- 0 GRCH	1 CH- 0 GRCH	1 CH- 0 GRCH	1 CH- 0 GRCH	1 CH- 0 GRCH
PUG	1-0-0-0	1-0-0-0	2-0-0-0	2-0-0-0	2-0-0-0	2-0-0-0
RAT TERRIER	2-0 S- 1 CH- 1 GRCH	2-0 S- 1 CH- 2 GRCH	0 CH- 2 GRCH	1-2 S- 0 CH- 2 GRCH	1-2 S- 0 CH- 1 GRCH	1-2 S- 0 CH- 1 GRCH
REDBONE COONHOUND	1-1-1-0	1-1-1-0	1-1-1-0	1-1-1-0	1-1-1-0	1-1-1-0
RHODESIAN RIDGEBACK	0-1-2-0	0-1-2-0	0-1-2-0	0-1-2-0	0-1-2-0	0-1-2-0
RUSSKIY TOY	1-1-3-0	1-1-3-0	1-1-3-0	1-1-3-0	1-1-3-0	1-1-3-0
RUSSKIY TOY ALTERED	0-1-0-0	0-1-0-0	0-1-0-0	0-1-0-0	0-1-0-0	0-1-0-0
SHETLAND SHEEPDOG	0-0-0-0	0-0-0-0	0-0-1-0	0-0-1-0	0-0-1-0	0-0-1-0
SHIBA	1-2-1-0	1-2-1-0	1-2-1-0	1-2-1-0	1-2-1-0	1-2-1-0
SMOOTH FOX TERRIER	3-4-2-2	3-4-2-2	3-4-2-2	3-4-2-2	3-4-2-2	3-4-2-2
STAFFORDSHIRE BULLTERRIER	0-0-1-2	0-0-1-2	0-0-1-2	0-0-1-2	0-0-1-2	0-0-1-2
STANDARD POODLE	3-0-4-0	3-0-4-0	3-0-4-0	3-0-4-0	3-0-4-0	3-0-4-0
TIBETAN SPANIEL	1-0-0-0	1-0-0-0	1-0-0-0	1-0-0-0	1-0-0-0	1-0-0-0
TOY FOX TERRIER	0-2-0-1	0-2-0-1	0-2-0-1	0-2-0-1	0-2-0-1	0-2-0-1
TREEING WALKER COONHOUND	0-1-1-0	0-1-1-0	0-1-2-0	0-1-2-0	0-1-2-0	0-1-2-0
VIZSLA	1-1-0-0	1-1-0-0	1-1-0-0	1-1-0-0	1-1-0-0	1-1-0-0
WEIMARANER	0-0-1-0	0-0-1-0	0-0-1-0	0-0-1-0	0-0-1-0	0-0-1-0
WHIPPET	3-4-1-2	2-3-1-2	2-3-1-2	2-3-1-2	2-3-1-2	2-3-1-2
WHITE SHEPHERD	0-0-0-2	0-0-0-2	0-0-0-3	0-0-0-3	0-0-0-3	0-0-0-3
YORKSHIRE TERRIER	0-0-0-0	0-1-0-0	0-0-0-0	0-0-0-0	0-0-0-0	0-0-0-0
<b>Breed conformation totals</b>	<b>249</b>	<b>245</b>	<b>262</b>	<b>262</b>	<b>252</b>	<b>251</b>
JUNIOR SHOWMANSHIP	5-Nov Jr 1-Op Sr	5-Nov Jr 1-Op Sr	1-Sub Jr 7-Nov Jr; 1-Op Sr	1-Sub Jr 7-Nov Jr; 1-Op Sr	1-Sub Jr 7-Nov Jr; 1-Op Sr	1-Sub Jr 7-Nov Jr; 1-Op Sr
<b>AGILITY TRIAL</b>	<b>X</b>	<b>X</b>	<b>Total - 72</b>	<b>Total - 72</b>	<b>Total - 67</b>	<b>Total - 67</b>
Agility I			37	37	34	34
Agility II			23	23	21	21
Agility III			12	12	12	12
<b>RALLY OBEDIENCE TRIAL</b>	<b>X</b>	<b>X</b>	<b>Total - 65</b>	<b>Total - 60</b>	<b>Total - 62</b>	<b>Total - 56</b>
RO 1			46	43	44	41
RO 2			14	13	13	11
RO 3			5	5	5	3

**Saturday has been designated as "Wear Pink" Day  
in support of the Susan G. Komen for the Cure.  
We would encourage you to show your support by wearing pink  
and help us in honoring those who are currently battling breast  
cancer; those who have lost the battle and those in remission.**



## GATEWAY NATIONALS JUDGING SCHEDULE\*

Location: Purina Farms-Purina Event Center, Gray Summit MO

**Please Note:** All times are Central Daylight Savings Time.

**Legend:** S1=Show 1; S2=Show 2

\*Subject to change at the discretion of the Event Committee

### FRIDAY, October 29, 2010 *Judge's may take a 30-minute lunch break at their discretion.*

RING 1	RING 2	RING 3	RING 4	RING 5	RING 6
<b>Conformation</b> <b>JUDGE:</b> Jeanne Heger	<b>Conformation</b> <b>JUDGE:</b> Tina Camp	<b>Conformation</b> <b>JUDGE:</b> Teresa "Teri" Kocher	<b>Conformation</b> <b>JUDGE:</b> Ann Heir	<b>Conformation</b> <b>JUDGE:</b> John Davidson	<b>Conformation</b> <b>JUDGE:</b> Matthew Proctor
Starts: 10:30 am	Starts: 11 am or after JS S2	Starts: 11 am or after JS S2	Starts: Follows JS S1	Starts: 11 am or after JS S2	Starts: 11am or after JS S2
Jr. Showmanship S1 GUN DOG S1	SCENTHOUND S1 TERRIER S1	COMPANION S1 NORTHERN S1	Jr. Showmanship S2 GUARDIAN S1	HERDING S1 ( <i>minus BSD</i> )	SIGHTHOUND S1
SCENTHOUND S2	GUN DOG S2	GUARDIAN S2	COMPANION S2	SIGHTHOUND S2 NORTHERN S2	HERDING S2 ( <i>minus BSD</i> ) TERRIER S2

### SATURDAY, October 30, 2010 *Judge's may take a 30-minute lunch break at their discretion.*

RING 1	RING 2	RING 3	RING 4	RING 5	RING 6	RING 7	RING 8
<b>Conformation</b> <b>JUDGE:</b> Matthew Proctor	<b>Conformation</b> <b>JUDGE:</b> Anne Hier	<b>Conformation</b> <b>JUDGE:</b> Tina Camp	<b>Conformation</b> <b>JUDGE:</b> John Davidson	<b>Conformation</b> <b>JUDGE:</b> Jeanne Heger	<b>Conformation</b> <b>JUDGE:</b> Teresa "Teri" Kocher	<b>Rally</b>	<b>Agility</b>
Starts: 9:30 am	Starts: 10 am or after JS S2	Starts: 10 am or after JS S2	Starts: Follows JS S1	Starts: 10 am or after JS S2	Starts: 10 am or after JS S2	Starts: 10 am See page 9 for details	Starts: 10 am See page 9 for details
Jr. Showmanship S1 GUN DOG S1	SCENTHOUND S1 TERRIER S1 ( <i>minus APBT;</i> <i>minus TFT</i> )	COMPANION S1 NORTHERN S1	Jr. Showmanship S2 APBT & TFT S1 GUARDIAN S1	HERDING S1 ( <i>minus BSD</i> )	SIGHTHOUND S1 HERDING S2 ( <i>minus BSD</i> )		
SCENTHOUND S2	GUN DOG S2	GUARDIAN S2	COMPANION S2	SIGHTHOUND S2 NORTHERN S2	TERRIER S2		

### SUNDAY, October 31, 2010 *Judge's may take a 30-minute lunch break at their discretion.*

**Parade of "Total Dog" - to be held in Rings 1, 2, 3 & 4 Combined, beginning at 9:00 a.m. Please be at ringside at 8:45 a.m.**

*A parade of "Total Dog" participants and award winners will be held on Sunday (October 31, 2010). A special judging of the Total Dog Best In Show will commence at the conclusion of the announcement of the Total Dog Qualifiers.*

RING 1	RING 2	RING 3	RING 4	RING 5	RING 6	RING 7	RING 8
<b>Conformation</b> <b>JUDGE:</b> Teresa "Teri" Kocher	<b>Conformation</b> <b>JUDGE:</b> John Davidson	<b>Conformation</b> <b>JUDGE:</b> Jeanne Heger	<b>Conformation</b> <b>JUDGE:</b> Tina Camp	<b>Conformation</b> <b>JUDGE:</b> Matthew Proctor	<b>Conformation</b> <b>JUDGE:</b> Sally Davidson	<b>Rally</b>	<b>Agility</b>
Starts: 9:30 am	Starts: 10 am or after JS S2	Starts: 10 am or after JS S2	Starts: Follows JS S1	Starts: 10 am or after JS S2	Starts: 10 am or after JS S2	Starts: 10 am See page 9 for details	Starts: 10 am See page 9 for details
Jr. Showmanship S1 GUN DOG S1	SCENTHOUND S1 TERRIER S1 ( <i>minus APBT;</i> <i>minus TFT</i> )	COMPANION S1 GUARDIAN S2	Jr. Showmanship S2 HERDING S1 ( <i>minus BSD</i> )	GUARDIAN S1 COMPANION S2	SIGHTHOUND S1 APBT & TFT S1 NORTHERN S1		
SCENTHOUND S2	GUN DOG S2	TERRIER S2	SIGHTHOUND S2	NORTHERN S2	HERDING S2 ( <i>minus BSD</i> )		

***Gateway Nationals Judging Schedule continued on page 9***

## GATEWAY NATIONALS JUDGING SCHEDULE continued\*

Location: Purina Farms-Purina Event Center, Gray Summit MO

**Please Note:** All times are Central Daylight Savings Time.

*Judge's may take a 30-minute lunch break at their discretion.*

\*Subject to change at the discretion of the Event Committee

### Ring 7 – Rally Obedience Saturday, October 30, 2010 Time: 10:00 AM

Judge Trial 1: Dovie Ryan  
Judge Trial 2: Lynda Portiss  
Class Order:

RO 1 A Trial 1  
RO 1 B Trial 1  
RO 1 A Trial 2  
RO 1 B Trial 2

RO 2 A Trial 1  
RO 2 B Trial 1  
RO 2 A Trial 2  
RO 2 B Trial 2

RO 3 A Trial 1 Div 1  
RO 3 B Trial 1 Div 1  
RO 3 A Trial 1 Div 2  
RO 3 B Trial 1 Div 2  
RO 3 A Trial 1 Div 3  
RO 3 B Trial 1 Div 3

RO 3 A Trial 2 Div 1  
RO 3 B Trial 2 Div 1  
RO 3 A Trial 2 Div 2  
RO 3 B Trial 2 Div 2  
RO 3 A Trial 2 Div 3  
RO 3 B Trial 2 Div 3

### Ring 7 – Rally Obedience Sunday, October 31, 2010 Time: 10:00 AM

Judge Trial 1: Dovie Ryan  
Judge Trial 2: Lynda Portiss  
Class Order:

RO 1 A Trial 1  
RO 1 B Trial 1  
RO 1 A Trial 2  
RO 1 B Trial 2

RO 2 A Trial 1  
RO 2 B Trial 1  
RO 2 A Trial 2  
RO 2 B Trial 2

RO 3 A Trial 1 Div 1  
RO 3 B Trial 1 Div 1  
RO 3 A Trial 1 Div 2  
RO 3 B Trial 1 Div 2  
RO 3 A Trial 1 Div 3  
RO 3 B Trial 1 Div 3

RO 3 A Trial 2 Div 1  
RO 3 B Trial 2 Div 1  
RO 3 A Trial 2 Div 2  
RO 3 B Trial 2 Div 2  
RO 3 A Trial 2 Div 3  
RO 3 B Trial 2 Div 3

### Ring 8 - Agility Saturday, October 30, 2010 Time: 10:00 AM

Trial 1 Judge: Joseph Reese  
Trial 2 Judge: Donna Gomer  
Class Order:

AGI A Trial 1 Div 1  
AGI B Trial 1 Div 1  
AGI A Trial 1 Div 2  
AGI B Trial 1 Div 2  
AGI A Trial 1 Div 3  
AGI B Trial 1 Div 3

AGI A Trial 2 Div 3  
AGI B Trial 2 Div 3  
AGI A Trial 2 Div 2  
AGI B Trial 2 Div 2  
AGI A Trial 2 Div 1  
AGI B Trial 2 Div 1

AGIII Trial 1 Div 1  
AGIII Trial 1 Div 2  
AGIII Trial 1 Div 3

AGIII Trial 2 Div 3  
AGIII Trial 2 Div 2  
AGIII Trial 2 Div 1

AGII A Trial 1 Div 1  
AGII B Trial 1 Div 1  
AGII A Trial 1 Div 2  
AGII B Trial 1 Div 2  
AGII A Trial 1 Div 3  
AGII B Trial 1 Div 3

AGII A Trial 2 Div 3  
AGII B Trial 2 Div 3  
AGII A Trial 2 Div 2  
AGII B Trial 2 Div 2  
AGII A Trial 2 Div 1  
AGII B Trial 2 Div 1

### Ring 8 - Agility Sunday, October 31, 2010 Time: 10:00 AM

Trial 1 Judge: Donna Gomer  
Trial 2 Judge: Joseph Reese  
Class Order:

AGII A Trial 1 Div 1  
AGII B Trial 1 Div 1  
AGII A Trial 1 Div 2  
AGII B Trial 1 Div 2  
AGII A Trial 1 Div 3  
AGII B Trial 1 Div 3

AGII A Trial 2 Div 3  
AGII B Trial 2 Div 3  
AGII A Trial 2 Div 2  
AGII B Trial 2 Div 2  
AGII A Trial 2 Div 1  
AGII B Trial 2 Div 1

AGIII Trial 1 Div 1  
AGIII Trial 1 Div 2  
AGIII Trial 1 Div 3

AGIII Trial 2 Div 3  
AGIII Trial 2 Div 2  
AGIII Trial 2 Div 1

AGI A Trial 1 Div 1  
AGI B Trial 1 Div 1  
AGI A Trial 1 Div 2  
AGI B Trial 1 Div 2  
AGI A Trial 1 Div 3  
AGI B Trial 1 Div 3

AGI A Trial 2 Div 3  
AGI B Trial 2 Div 3  
AGI A Trial 2 Div 2  
AGI B Trial 2 Div 2  
AGI A Trial 2 Div 1  
AGI B Trial 2 Div 1

**CLASS CHANGE/CORRECTION OF ENTRY**

- 1. Owners are responsible for the accuracy of information in the entry forms, regardless of who may make such errors. Owners and exhibitors are responsible for correcting any errors in their entry.
- 2. Dogs that, according to their owners' records, have completed the requirements for a title after the closing of entries, may be transferred from the entered class to another class for which the dog is now eligible, provided that a request for transfer is made in writing to UKC not later than one-half hour prior to the start of any regular judging at the show.
- 3. All other corrections to entries must be made in writing to the Event Secretary not later than one-half hour prior to the start of any regular judging at the show.

**CANCELLATION AND REFUNDS**

- 1. Entry Cancellations or substitutions MUST be received in writing prior to the closing of Pre-Entries or the closing of the activity, whichever comes first, and MUST include the dog's UKC number, breed and name. Cancellations or substitutions received by telephone are NOT acceptable. Substitutions require a new completed entry form.
- 2. No refund of entry fees will be made for entries cancelled after the Pre-Entry deadline, except in the cases of bitches that come into season and are entered in "Agility and/or Rally Obedience" events. In those cases, refunds may be obtained by providing the superintendent with a veterinarian's certificate verifying that the bitch came into season after the closing date. The certificate may be mailed, provided the postmark is no later than the date prior to the day of the trial, or delivered by hand to the Superintendent before the start of the trials.
- 3. Entry fees shall not be refunded in the event that a dog is absent, disqualified, excused by Veterinarian or Judge, or barred from competition by action of Event Committee.
- 4. If, because of riots, civil disturbances, or other acts beyond the control of the host organization it is impossible to open or to complete a show or trial, no refund of entry fee will be made.
- 5. Every effort will be made to find all duplicate entries before processing. If a duplicate entry is processed, however, no refund will be made.
- 6. Entry overpayments may be donated to the general trophy fund.
- 7. If, in the opinion of the host club, the well being of dogs, exhibitors or spectators is at risk due to extreme weather conditions, such as, but not limited to snow storms, hurricanes, lightning, or extreme heat, the host club may cancel or stop a show or trial before completion. No refunds will be made in such cases.
- 8. Cancelled entries submitted before the activity close of entries will be charged a \$10 processing fee. No entries will be refunded after the activity is closed.

**SCHEDULING CONFLICTS FOR DOGS COMPETING IN MULTIPLE EVENTS**

- 1. Exhibitors are responsible for being available for judging at the scheduled time.
- 2. Every possible effort will be made to accommodate exhibitors who have dogs entered in multiple events, but judges are not required to wait for dogs. Exhibitors are advised to as early as possible and notify stewards in all rings affected by the conflict so that judges may more easily work around any conflicts.
- 3. If an Agility, Rally Obedience or other performance exhibitor misses a scheduled judging time, the judge has the discretion to allow that exhibitor to run at the end of the class when possible or mark the dog absent. The Judge's decision is final.
- 4. Exhibitors, please be advised that the *Weight Pulls offered by the UNWPA* held in conjunction with the Gateway Nationals will be run without accommodations for dogs and/or handlers with conflicts. Therefore, any dog entered in Weight Pull will be required to pull with its respective weight class. No conflicts between weight pull or any other activity will be accommodated.

**Total Dog Award. (\*Offered Saturday, October 30, 2010) • Conformation and Performance Non-Licensed Class**

To be eligible for a "Total Dog" award a dog must:

- 1. On Saturday, October 30, 2010, compete in regular conformation with competition and win one of the following classes: Best Male/Female of Variety, Best Male/Female, Best of Winners, Champion, Grand Champion, Best of Breed, Group 1 through 4 (providing the group placement has competition, Best in Multi-Breed Show or Reserve Best In Multi-Breed Show, and



Champion Classes. The following will be granted a competition win:

Champion with competition win.

Reserve Champion win with 3 or more dogs in competition.

Champion Award of Merit (AOM) shall count toward competition win when computing a total dog qualifier. The number of Champion Awards of Merit to be awarded shall be calculated as follows:

- 5-9 dogs in competition – 1 CAOM
- 10-14 dogs in competition – 2 CAOM
- 15-19 dogs in competition – 3 CAOM
- 20-24 dogs in competition – 4 CAOM
- 25-29 dogs in competition – 5 CAOM
- 30-34 dogs in competition – 6 CAOM
- 35-40 dogs in competition – 7 CAOM

Grand Champion Classes. Grand Award of Merits (GAOM) shall count towards competition when computing a total dog qualifier. The number of Grand Awards of Merit to be awarded shall be calculated as follows:

- 3-4 dogs in competition – 1 GAOM
- 5-9 dogs in competition – 2 GAOM
- 10-14 dogs in competition – 3 GAOM
- 15-19 dogs in competition – 4 GAOM
- 20-24 dogs in competition – 5 GAOM
- 25-29 dogs in competition – 6 GAOM
- 30-34 dogs in competition – 7 GAOM
- 35-40 dogs in competition – 8 GAOM

- 2. On the same day, earn a qualifying score in an agility trial, or rally obedience trial or
- 3. On Friday October 29, 2010, earn a qualifying pull in weight pull (hosted by \*UNWPA). \*Those participating must sign up at the weight pull using the appropriate form provided by UKC. This change is intended to eliminate as many conflicts as possible so participants in the National Pull can focus on this important event yet still be able to qualify for the UKC Total Dog Award.
- 4. Dogs who meet the above requirements will receive a special "Total Dog" award.

**NOTE:** Total Dog Qualifiers must meet at Ring 1 at 8:45 a.m. on Sunday, October 31, 2010 for the Total Dog Awards ceremony; to be immediately followed by Total Dog Best In Show judging.

**JUDGES NAMES & ADDRESSES**

Tina Camp, #6465	.....63 High St, Leesburg NJ 08327
John F. Davidson, #25	.....13400 N Lakewood Dr, Dunlap IL 61525
Sally Davidson, #6683	.....13400 N Lakewood Dr, Dunlap IL 61525
Donna Gomer, #4156	.....2374 Sunset Cir, Brodbeck's PA 17329
Jeanne R Heger, #6506	.....PO Box 2006, Crystal Lake IL 60039
Anne M. Hier, #6624	.....5674 Lake Pleasant Rd, North Branch MI 48461
Teresa Kocher, #5240	.....33 Schneider Dr, Fairborn OH 45324
Lynda G. Portiss, #6880	.....24680 Ray Davis Rd, Claremore OK 74019

Matthew K. Proctor, #6523 .....74211 River Rd, Covington LA 70435  
 Joseph Reese, #5598 .....0151 W 450 N, La Porte IN 46350  
 Dovie Ryan, #6917 .....7224 S Dennis Blvd, Broken Arrow OK 74014

**EMERGENCY VETERINARIAN**

- **Pacific Animal Hospital**; 450 Flier Dr.; Pacific, MO 63069 (Must call ahead) 636-257-2100 / 24-hour emergency services available. **Directions (approximately 4 miles from show grounds):** NORTH on PURINA DR toward DANFORTH DR. Turn LEFT onto DANFORTH DR. Turn LEFT onto MO-MM (go 1.1 miles) Turn RIGHT onto MO-100 (go 0.5 miles), Turn LEFT onto US-66/W OSAGE ST.(go 2.7 miles), Turn RIGHT onto FLIER DR. Pacific Animal Hospital is on the RIGHT.
- **St. Louis Emergency Group**, Animal Emergency Clinic (24 hours), 9937 Big Bend Road, St. Louis, MO (Please call ahead) 314-822-7600

**EVENT PHOTOGRAPHER** • Thomas Photography, 304 Morey St, Waukesha WI 53188; 262-544-1822; mehcz8195@msn.com

**SPECIALTY SCHEDULE**

	<b>Entries</b>	<b>Show</b>	<b>Judge</b>
<b>FRIDAY OCTOBER 29, 2010</b>			
<b>RING 1 — United Shetland Sheepdog Association</b> Herding Dog Group ( <i>Minus BSD</i> )	12-1 pm	To follow BIMBS	William Chrzanowski
<b>Gold Country Hounds &amp; Hunters</b> Scenthound Group	12-1 pm	To follow USSA	William Chrzanowski
<b>RING 2 — United Greyhound Club</b> Sighthound & Pariah Dog group and Italian Greyhound	12-1 pm	To follow BIMBS	Tim Parr
<b>RING 3 — Illinois Toy Fox Terrier Association</b> Terrier Group	12-1 pm	To follow BIMBS	Richard Klatt
<b>United Pomeranian Association</b> Companion Group	12-1 pm	To follow ITFTA Show	Richard Klatt
<b>RING 4 — Israel Canaan Dog Club of America</b> National Specialty event	12-1 pm	To follow BIMBS	Lorna Hastings
<b>Additional Performance / Companion events</b>			
<b>Dock Jumping — Ultimate Air Dogs</b> Splashes 12 noon, 2 pm & 4 pm			Milt Wilcox / Brian Wilcox
<b>Lure Coursing — United Greyhound Club</b> CA, CT, RS	Entries 8-9 am Meet 9:30 am		Laurie Soutar / Dana Jensen
<b>Weight Pull — United National Weight Pull Association</b> Wheels - B	Entries 7:30-8:30 am Weigh in 7:30-9 am Pull 10 am		Michael Snyder
<b>SATURDAY OCTOBER 30, 2010</b>			
<b>RING 1 — Michiana German Shepherd Dog Club</b> German Shepherd Dog Specialty	12-1 pm	To follow BIMBS	Linda Reece
<b>RING 2 — Akbash Dog Association of America</b> Akbash Specialty	12-1 pm	To follow BIMBS	TBA
<b>RING 3 — Mid-Lakes Australian Shepherd Dog Club</b> Australian Shepherd Dog Specialty	12-1 pm	To follow BIMBS	Richard Klatt
<b>RING 4 — United Poodle Breeds Association</b> All Poodles (Std, Mini, Toy) Solid & Multi-colored	12-1 pm	To follow BIMBS	Sally Davidson
<b>RING 5 — United Hungarian Wire-Haired Vizsla Assn</b> Hungarian Wire-Haired Vizsla Sp.	PE ONLY	To follow BIMBS	Julie Hatlas-Pepper
<b>Ring 6 — United Alaskan Klee Kia Association</b> Alaskan Klee Kai Specialty	12-1 pm	To follow BIMBS	Mark Golden
<b>Additional Performance / Companion events</b>			
<b>Dock Jumping</b> Ultimate Air Dogs	Splashes 10 am, 12 noon & 2 pm		Milt Wilcox / Brian Wilcox
<b>Lure Coursing</b> United Greyhound Club	Entries 8-9 am Meet 9:30 am		Laurie Soutar / Dana Jensen
<b>Weight Pull — United National Weight Pull Association</b> <b>NATIONAL PULL EVENT</b> PRE-ENTRY ONLY Wheels - B	Weigh in 7:30-9 am Pull 10 am		Michael Snyder
<b>SUNDAY OCTOBER 31, 2010</b>			
<b>Additional Performance / Companion events</b>			
<b>Dock Jumping</b> Ultimate Air Dogs	Splashes 10 am & Finals 2:30		Milt Wilcox / Brian Wilcox
<b>Lure Coursing</b> United Greyhound Club CA, CT, RS	Entries 8-9 am Meet 9:30 am		Laurie Soutar / Dana Jensen
<b>Weight Pull</b> United National Weight Pull Association Wheels - B	Entries 7:30-8:30 am Mike Hansen (Michael Snyder backup) Weigh in 7:30-9 am Pull 10 am		

## SPECIAL EVENTS & SPECIALTIES HELD IN CONJUNCTION WITH UKC GATEWAY NATIONAL

Please use the official UKC Entry Form to enter these events.

Do not use the GATEWAY NATIONAL Entry Form. Send all entries to the Event Secretary/Event Manager listed. DO NOT SEND ENTRIES TO UKC.

TEMPORARY LISTINGS WILL BE AVAILABLE FOR ALL SPECIALTY CLUBS TAKING DAY OF SHOW ENTRIES  
(Through UKC)

### AKBASH DOG ASSOCIATION OF AMERICA

*Akbash Specialty – ALT offered*

**Oct 30; Kathy Lorentzen; NLC:** Novice Puppy, Stud Dog, Brood Bitch, Veteran, Brace

**Entries** 12 noon-1 pm Show first available ring after Gateway National event  
DOS \$25; NLC \$5; PE \$15 received by October 25, 2010

www.akbashclub.com

Chairperson: Patrick Beaver (303) 709-2333 malevkuvasz@aol.com

**Event Secretary:** Nancy Rix, 3814 Lois Rd. East, Sanger TX 76266 (940) 458-3837 or (940) 902-9890 cell nrixdun@gmail.com

### GOLD COUNTRY HOUNDS & HUNTERS

*Scenthound Group Event – ALT offered*

**Oct 29; William Chrzanowski; NLC:** Novice Puppy, Stud Dog, Brood Bitch, Veteran, Brace

**Entries** 12 noon-1 pm Show first available ring after Gateway National event  
DOS \$25 (cash only); NLC \$5; PE \$18 received by October 20, 2010

Chairperson: Lynzie Baldwin (818) 317-3811 lbaldwin@earthlink.net

**Event Secretary:** Mark Golden, PO Box 96, Gold Run CA 95717-0096, (408) 504-4794 mcgolden@sbcglobal.net

### ILLINOIS TOY FOX TERRIER ASSOCIATION

*Terrier Group Event – ALT offered*

**Oct 29; Richard Klatt; NLC:** Novice Puppy, Stud Dog, Brood Bitch, Veteran, Brace

**Entries** 12 noon-1 pm Show first available ring after Gateway National event  
DOS \$25; NLC \$8; PE \$18 received by October 22, 2010

Chairperson: Bob Fast

**Event Secretary:** Lila Fast, 514 S Conrey, Knoxville IA 50138-3206 (641) 842-4842 fastdrake@lisco.com

### ISRAEL CANAAN DOG CLUB OF AMERICA

*Canaan Dog Specialty – National Event – ALT offered*

**Oct 29; Lorna Hastings; NLC:** Novice Puppy, Stud Dog, Brood Bitch, Veteran, Brace, Special Exhibition (Parade of Titleholders)

**Entries** 12 noon-1 pm Show first available ring after Gateway National event  
DOS \$35; NLC \$20; PE \$22, \$15 add'l entry of same dog in add'l classes received by October 11, 2010

www.canaandogs.org

Chairperson: Lee Boyd (785) 748-0020 leeboyd@att.net

**Event Secretary:** Victor Kaftal, 4144 State Line Rd, Okeana OH 45053 (513) 367-9474 kaftal@math.uc.edu

### MICHIANA GERMAN SHEPHERD DOG CLUB

*German Shepherd Dog Specialty – ATL offered*

**Oct 30; Linda Reece; NLC:** Novice Puppy, Stud Dog, Brood Bitch, Veteran, Brace

**Entries** 12 noon-1 pm Show first available ring after Gateway National event  
DOS \$25; NLC \$5; PE \$20 received by Oc-

tober 23, 2010

Chairperson: Karen Cattin

**Event Secretary:** Glen Cattin, 3502 E SR. 14, Winamac IN 46996 (574) 242-2201 k99@pwrtc.com

### MID-LAKES AUSTRALIAN SHEPHERD CLUB

*Australian Shepherd Specialty – ALT offered*

**Oct 30; Richard Klatt (replacing Linda Reece); NLC:** Novice Puppy, Stud Dog, Brood Bitch, Veteran, Brace, Special Exhibition (Best Bred by Handler)

**Entries** 12 noon-1 pm Show first available ring after Gateway National event  
DOS \$25; NLC \$5; PE \$18 received by October 25, 2010

www.midlakesaustralianshepherdclub.com

Chairperson: Karen Cattin (replacing Kathleen Strunk)

**Event Secretary:** Stephanie Strunk, 10386 Kuehl Court, Rochelle IL 61068 (815) 266-9536 midlakesasc@aol.com

Chairperson changed 10/12/10

### ULTIMATE AIR DOGS

#### GRAY SUMMIT (O) DJ

**October 29-31, 2010**

**Oct 29;** Milt & Brian Wilcox UA (Ultimate Air) Splash 12 noon, 2 pm & 4 pm

**Oct 30;** Milt & Brian Wilcox UA (Ultimate Air) Splash 10 am, 12 noon & 2 pm

**Oct 31;** Milt & Brian Wilcox UA (Ultimate Air) Splash 10 am & Finals 2:30 pm

DOS & PE \$20 per splash

On-Line Entries at:

www.ultimateairdogs.com

Purina Farms / Gateway Nationals, 200 Checkerboard Drive. www.ukcdogs.com

**Event Secretary:** Cathi Bifano (239) 896-8311 cathi@bigairmaximus.com

### UNITED ALASKAN KLEE KAI ASSOCIATION

*Alaskan Klee Kai Specialty – ALT offered*

**Oct 30; Mark Golden (replacing Barbara Marin); NLC:** Novice Puppy, Stud Dog, Brood Bitch, Veteran, Brace

**Entries** 12 noon-1 pm Show first available ring after Gateway National event  
DOS \$25; NLC \$5; PE \$20, \$15 add'l dogs/same owner received by October 27, 2010

www.uakka.com

Chairperson: Barbara Weibelhaus (replacing Desarie Fletcher) (785) 340-5503 kskleekai@yahoo.com

**Event Secretary:** Desarie Fletcher (replacing Julie Baker), 19510 Van Buren Blvd #F3-376, Riverside CA 92508 (951) 903-8179 akmmommy@sbcglobal.net

### UNITED GREYHOUND CLUB

*Sighthound & Pariah Dog Group and Italian Greyhound Specialty – ALT offered - Lure Coursing*

**Oct 29; Tim Parr SIGHT IG; NLC:** Novice Puppy, Veteran

Show Entries 12 noon-1 pm Show first available ring after Gateway National event

**Oct 29; Laurie Soutar (Dana Jensen backup) CA CT RS Entries** 8-9 am Meet

9:30 am

**Oct 30; Dana Jensen (Lee Hayes backup) CA CT RS Entries** 8-9 am Meet 9:30 am

**Oct 31; Lee Hayes (Laurie Soutar backup) CA CT RS Entries** 8-9 am Meet 9:30 am

DOS \$25; NLC \$5; PE \$20, \$15 2nd dog/same household received by October 19, 2010

Chairperson: Dave McMahan (519) 458-8181 sirius-supply@sympatico.ca

**Event Secretary:** Leslie Reeve, 8401 N. Washington Blvd, Indianapolis IN 46420 (317) 253-2163 leslie.reeve@att.net

### UNITED HUNGARIAN WIRE-HAIRED VIZSLA ASSOCIATION

*Hungarian Wire-Haired Vizsla Specialty – ALT offered*

#### PRE-ENTRY ONLY

**Oct 30; Julie Hatlas-Pepper; NLC:** Novice Puppy, Stud Dog, Brood Bitch

Show first available ring after Gateway National event

PE ONLY \$25, ALT \$15; NLC \$10 received by October 16, 2010

www.uhwva.com

Chairperson: Jim Roginski (309) 854-0211 rojohse@comcast.net

**Event Secretary:** Peg Roginski 8377 State Highway 78, Kewanee IL 61433 (309) 525-0995 rojohseatkewanee@yahoo.com

### UNITED NATIONAL WEIGHT PULL ASSOCIATION

*Weight Pull event*

**Oct 29; Michael Snyder WPULL** Wheels-B Entries 7:30-8:30 am Weigh in 7:30-9 am Pull 10 am

**Oct 31; Mike Hansen (Michael Snyder backup) WPULL** Wheels-B Entries 7:30-8:30 am Weigh in 7:30-9 am Pull 10 am  
DOS \$25; PE \$20 received by October 15, 2010

Chairperson: James Smack

**Event Secretary:** Karyn Dawes, PO Box 1719, San Marcos CA 92079 (760) 471-1144 kdawes@petsusa.com

### UNITED NATIONAL WEIGHT PULL ASSOCIATION

*National Weight Pull Event*

#### PRE-ENTRY ONLY

**Oct 30;** All Dogs Must Be UKC Registered/No TL Dogs Allowed. There will be no conflicts for the National Pull. Qualifying pulls will not count toward Total Dog. Michael Snyder WPULL Wheels-B Weigh in 7:30-9 am Pull 10 am

PE ONLY \$25; UNWPA Members \$20 received by October 15, 2010

Chairperson: James Smack

**Event Secretary:** Karyn Dawes, PO Box 1719, San Marcos CA 92079 (760) 471-1144 kdawes@petsusa.com

### UNITED POMERANIAN ASSOCIATION

*Companion Dog Group – ALT offered*

**Oct 29; Richard Klatt (replacing Linda Reece) COMP; NLC:** Novice Puppy, Stud Dog, Brood Bitch, Veteran, Brace

Entries 12 noon-1 pm Show first available

ring after Gateway National event

DOS \$25 (cash only); NLC \$5; PE \$18 received by October 25, 2010

www.unitedpomeranianassociation.com  
Chairperson: Karen Cattin (replacing Kathleen Strunk)

**Event Secretary:** Stephanie Strunk, 10386 Kuehl Court, Rochelle IL 61068 (815) 266-9536

unitedpomassoc@aol.com

Chairperson changed 10/12/10

### UNITED POODLE BREEDS ASSOCIATION

*Poodle Specialty (Standard, Miniature, Toy / Solid & Multi-colored) ALT offered*

**Oct 30; Sally Davidson; NLC:** Novice Puppy, Stud Dog, Brood Bitch, Veteran, Brace

Entries 12 noon-1 pm Show first available ring after Gateway National event

DOS \$25; NLC \$10; PE \$20 received by October 20, 2010

Chairperson: Denise Spotila (573) 378-9715 brookside.casa.st.parti.poodles@gmail.com

**Event Secretary:** David Spotila, (replacing Natalie Hefner) 17858 Brookside Road, Barnett, MO 65011

### UNITED SHETLAND SHEEPDOG ASSOCIATION

*Herding Group Event (except BSD) – ALT offered*

**Oct 29; William Chrzanowski (replacing Malinda Julien)**

Entries 12 noon-1 pm Show first available ring after Gateway National event

DOS \$25; PE \$15 received by October 22, 2010

Chairperson: Kim Bond (931) 403-7066 quiltingcove@yahoo.com

**Event Secretary:** Karen Shivers, 4085 FM 196 South, Blossom TX 75416 (903) 491-6572 stonefox@1starnet.com

### UKC Judge's Educational Seminar

Oct 29-30